

7.1.4 Institution has water management and conservation initiative in the form of

1. Rain water Harvesting

2. Waste water recycle

3. Borewells, tank

4. Economical uses reduce wastage.

Preamble :

Total area of the college campus is about nearly one cres. the college campus is in rural area there is no municipal water supply for the college the college depends on groundwater for all its need his efficient uses of available water and adoption of water conservation measures are essential the daily requirement of the water in the campus is around 3000 liters.

A. Rain water Harvesting:

Rainwater harvesting has been an integral part of the infrastructure at the campus and it is used to collect water from rainfall events. Theses water is either Store or late into the ground the quantity of water collected depends on the quantity of rainfall and frequency of rainfall in city water conservation facilities are available in the institute.

The first and foremost is rainwater harvesting the rain water coming from which top and that flowing within the campus are collected in bore well through pipes to recharge groundwater.

The related geo-tag photos are shown below



Ganesh Kumar
PRINCIPAL
IRE Education Society's
College of Education (II Eo)
No 140/2 ARVI, Tike Hatti
Dist: Pune-411225



Ganeshwar A
 PRINCIPAL
 Ira Education Society's
 College of Education (B. Ed.)
 Nr No 140/2 ARVI, Tan. Havri
 Dist. Pune-411227/5

B. Wastewater recycling:

Wastewater are used for gardening and watering of tree. waste water collected and carried through pipeline which provides water directly to plants.

All the stakeholders of the college are well educated to use water economically and efficiently.

The geo tagged photo's are shown below



Ganesh Kumar
PRINCIPAL
Ira Education Society's
College of Education (B. Ed.)
No. 140/2, A.R.V. Tal. Harnali
Dist. Pune-411225

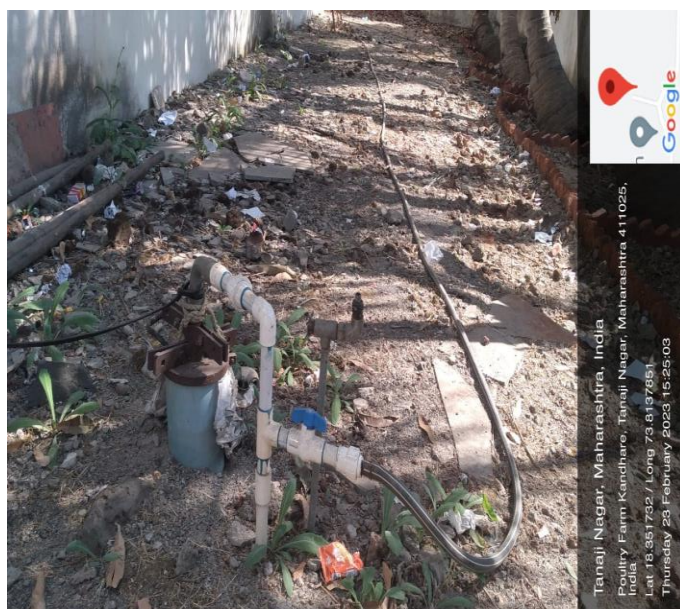
C. Bore well :

As a part of water conservation facilities that are available in the institution the two borewell facilities are available in the campus.

Location of borewell :

Sr no.	Number of building	Bore-well death
1	Building No. 2	300 Feet
2	Building No. 2	350Feet

The related photo are shown below.



Ganesh
PRINCIPAL
Ira Education Society's
College of Education (B. Ed.)
No. 1402/ARV, T. H. H. H.
D. No. 1402/ARV, T. H. H. H.

3. Construction of tank

As a part of water conservation facilities that are available in the institution the construction of water tanks are provided in the campus. In the institute we build 1 ground tank to collect and storage the water for daily need.

The related geo-tagged photos are shown below.



Ganesh Kumar
PRINCIPAL
Ira Education Society's
College of Education (B. Ed.)
No. 140/2 A/RM, Tale Havri,
Dhule - 431225



Ganesh
 PRINCIPAL
 Ira Education Society's
 College of Education (B. Ed.)
 Nr No 140/2 ARVI, Tanaji Nagar
 Dist. Pune 411227-5



Ganesh
 PRINCIPAL
 Ira Education Society's
 College of Education (B. Ed.)
 No. 140/2 ARVI, Tal. Haveri
 Dist. Pune-411225

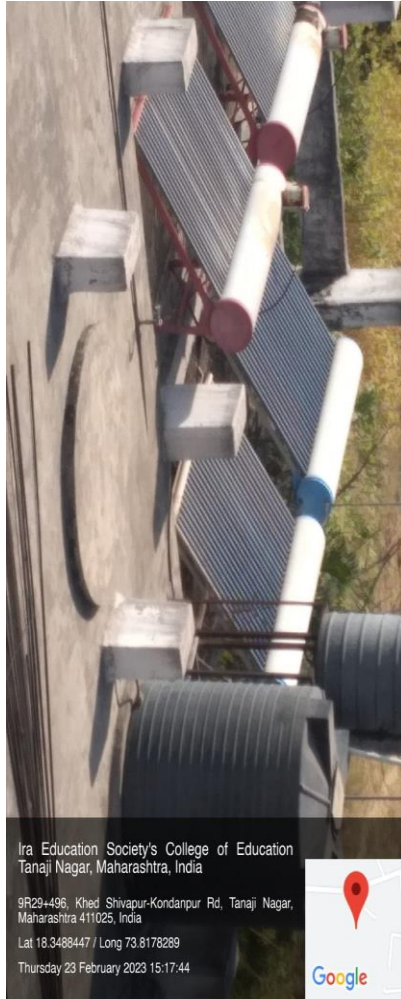


4. Economical usage & Reduced Wastage :

Solar Panel for economic usage :



Ganesh Kumar
 PRINCIPAL
 Ira Education Society's
 College of Education (B. Ed.)
 No. 140/2 ARVI, Tal. Haveri
 Dist. Pune-411227/5



Ganesh
PRINCIPAL
Ira Education Society's
College of Education (B. Ed.)
Sr No 1402/ARM, Tal. Haveri,
Dist. Pune-411225